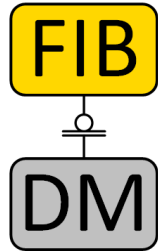
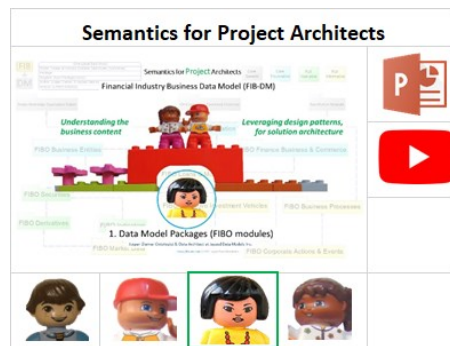


FIBO and FIB-DM are the Industry Standard



The Financial Industry Business Ontology (FIBO) is the blueprint for Enterprise Ontologies and the Knowledge Graph.

Twelve hundred users downloaded the ontology-derived Financial Industry Business Data Model.



Education resources cover model structure, concept hierarchies, and the transformation process.



Stakeholder

Education course for DAs, Stakeholders, and Ontologists



Project Data Architect experienced in logical and physical data modeling. You want copy design solutions for your department or sub-domain database.



Enterprise Data Architect experienced in industry reference models. You want to customize the industry-standard for your organization.



Finance / Business / Management. As a stakeholder, you want immediate returns without a huge investment.

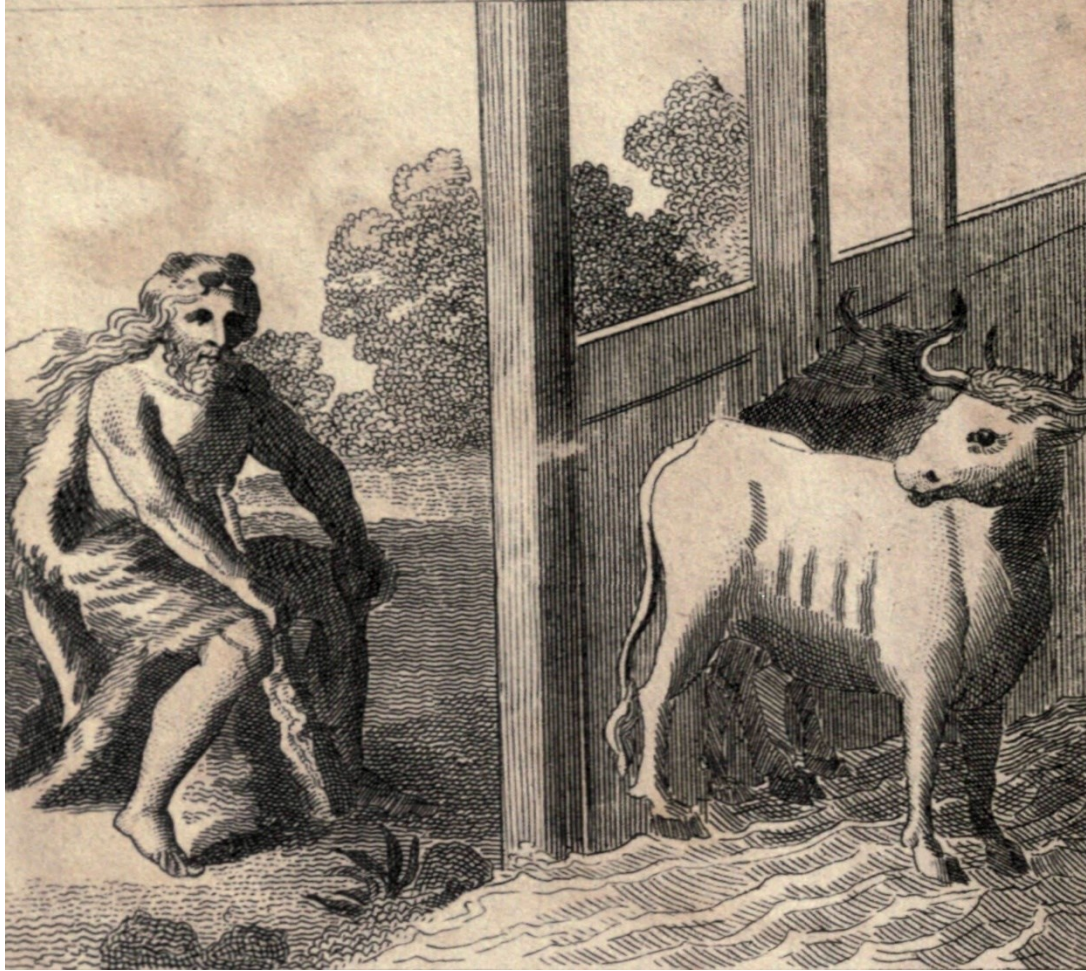


Ontologist is responsible for operational and enterprise/knowledge graph ontology design. You want to understand FIBO modules.



Stakeholder

The challenge: Building an Enterprise Model



Hercules takes a break from cleaning the Augean Stables.

Irrespective of the notation, Entity-Relationship (ER) or Ontology Web Language (OWL),

customizing the industry-standard reference model is herculean labor.

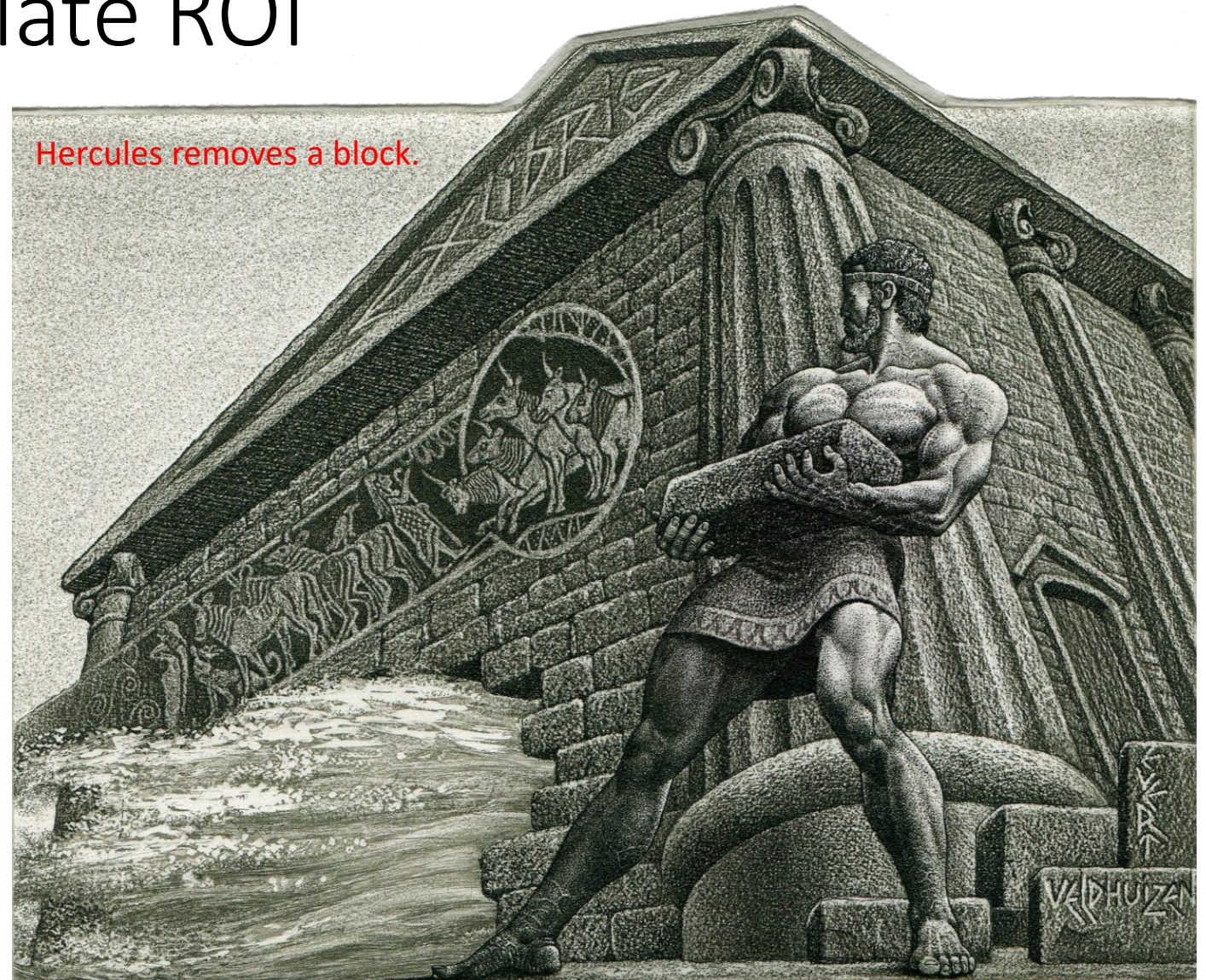


The vision: Immediate ROI

Using the reference model as an encyclopedia of building blocks.

Leveraging design patterns as blueprints for solution architecture.

Reaping benefits from day one.



The way: Two-pronged learning approach

Enterprise
Architecture



Focus on hierarchies
of the 15 Concepts
and Associative
Entities



Solution
Architecture



Focus on FIB-DM
packages (FIBO
modules) for the
project – not the
whole model.



Stakeholder

New business-driven, 12-lesson education series

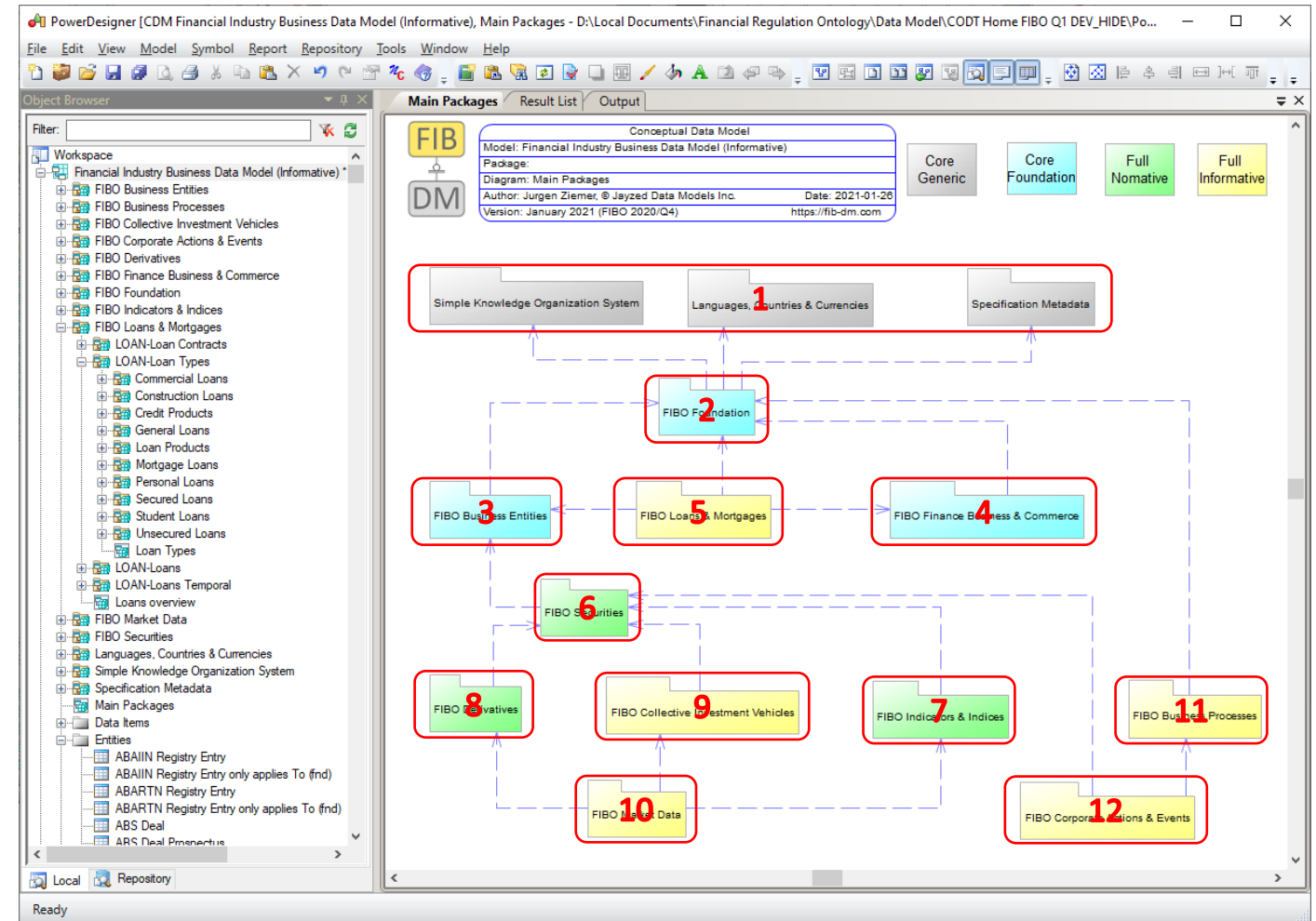
The Enterprise Data Architect rationalizes the whole model, traversing the 15 concept hierarchies and the associative entities.

The Project Data Modeler wants to copy blueprints and design patterns for a specific business solution.

The Project/Solution track teaches the business content in detail.

You deep-dive into packages relevant to your project.

Twelve units, 30-minute lecture, 1–2-hour classes with follow-along and Q&A.



Monsters

Many Financial Institutions had multi-year, multimillion-dollar failures creating an Enterprise Model.

Some comments called the 4,000-entity FIB-DM, the world's largest data model, a monster.

A misconception of both the Financial Industry Business Data Model and Ontology. You can:

1. Leverage the industry-standard as a reference model facilitating common names, definitions, design patterns, and reference data across the enterprise.
2. Scope the Enterprise model of appropriate size.
3. Use iterative development cycles (Spiral/Agile) harvesting tangible benefits for projects from day one.

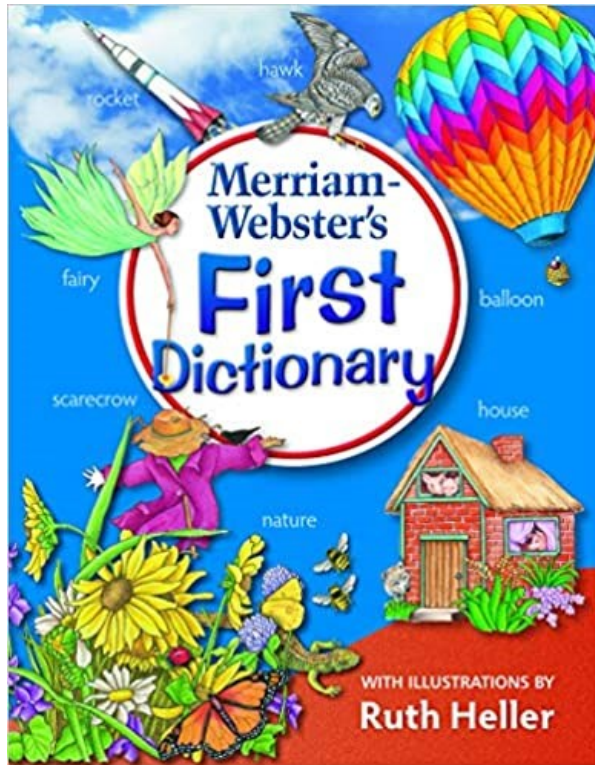


Stakeholder

<https://fib-dm.com> © Jayzed Data Models Inc. 2021

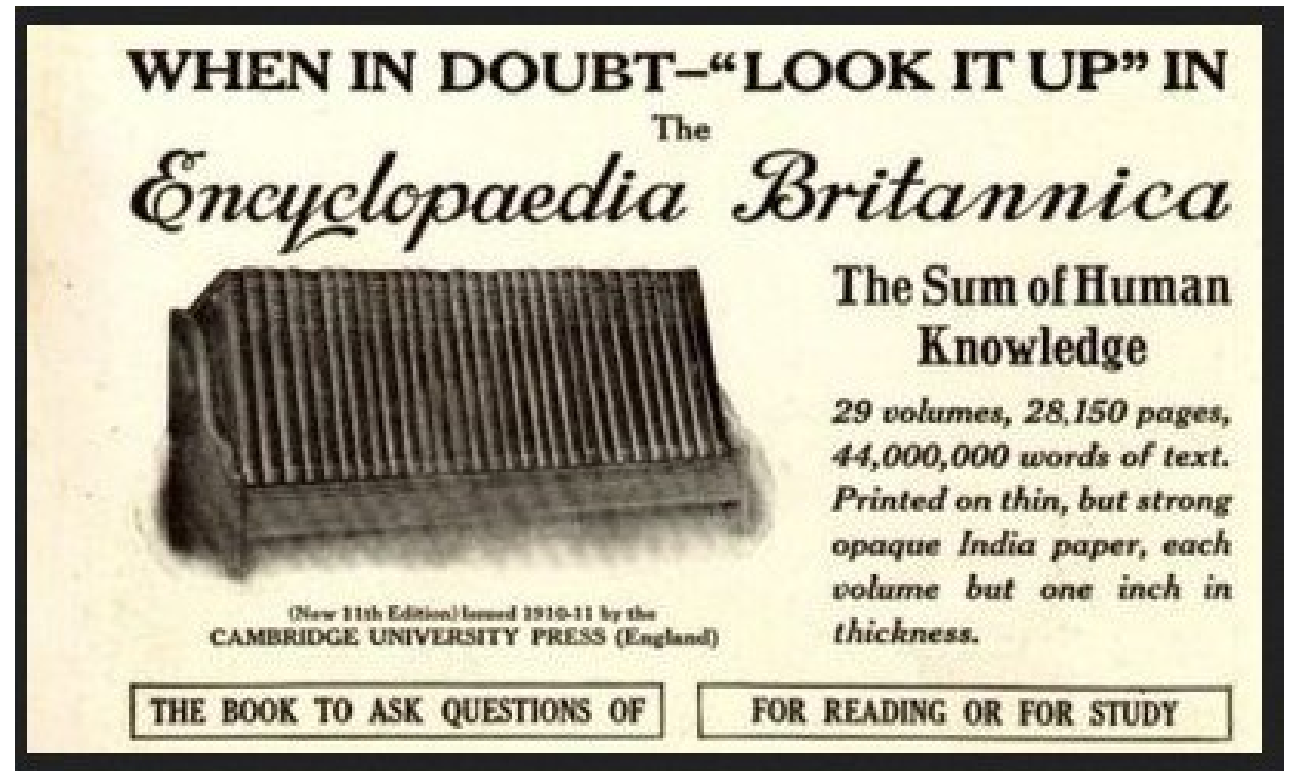


An Encyclopedia can't be too big



We must not revert to rocket, balloon, and fairy

versus

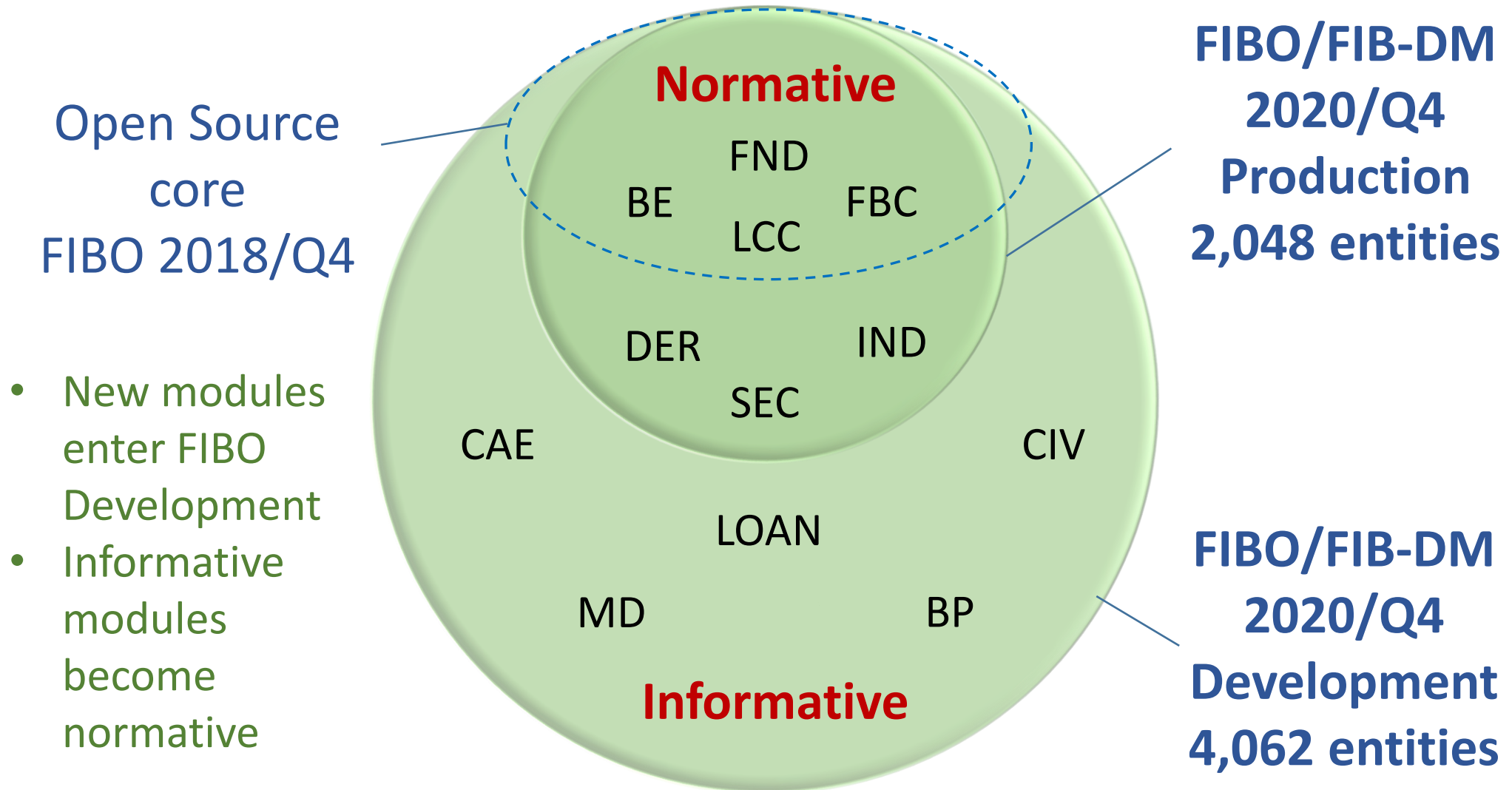


When in doubt - look it up in FIB-DM



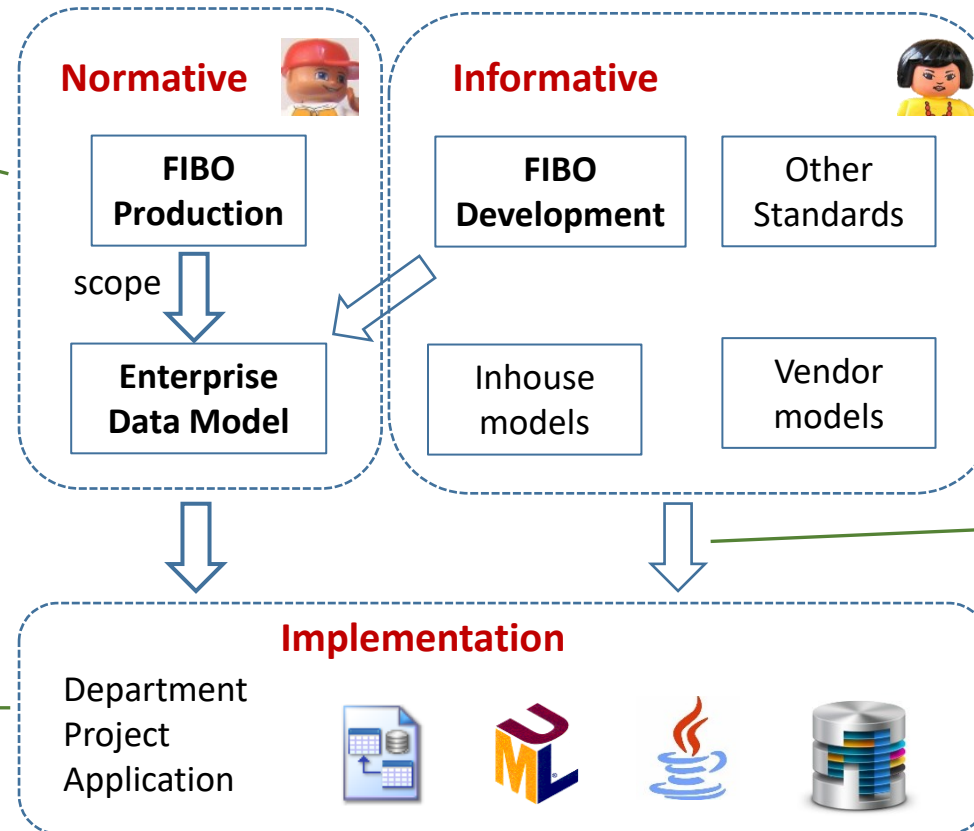
Stakeholder

Two models – Normative and Informative



Using the Informative FIBO Data Model

We adhere
to the
industry-
standard



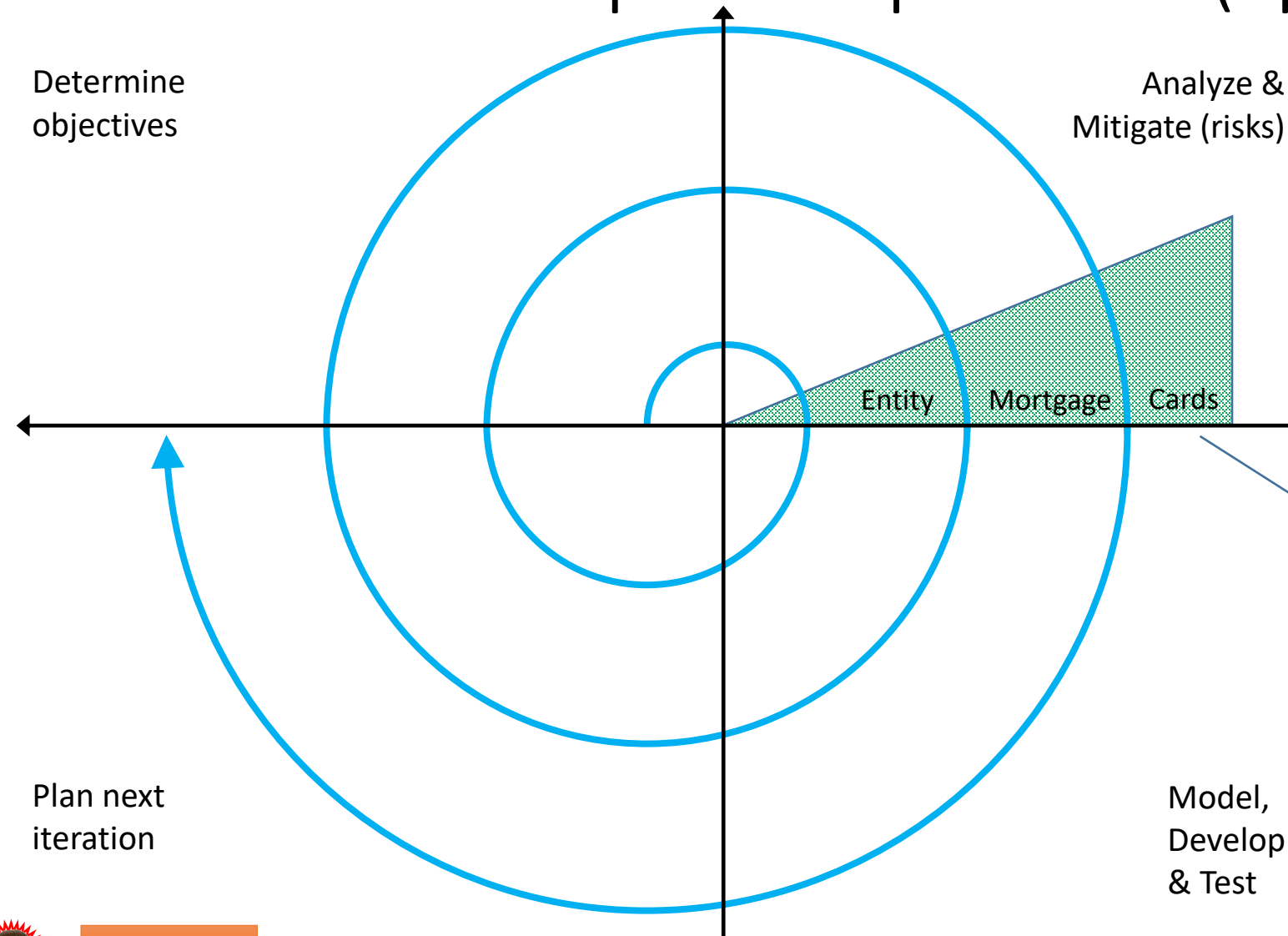
We consult
FIBO
development

Our method
is to derive

Our goal is
leverage



Iterative development process (spiral or agile)



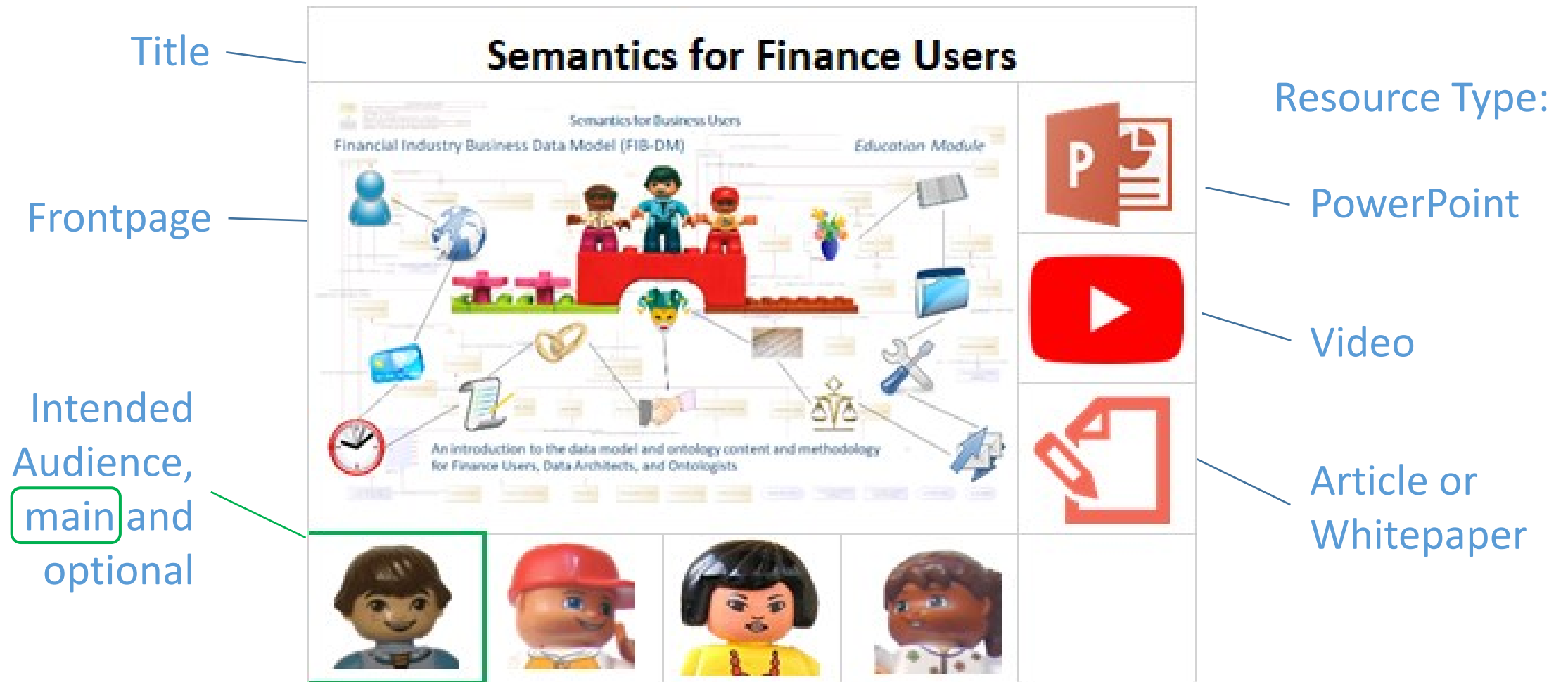
Cost for first iterations are low and remain under control

Deliverables provide a cumulative benefit



Stakeholder

Data Model Education Resources (info cards)



Stakeholder

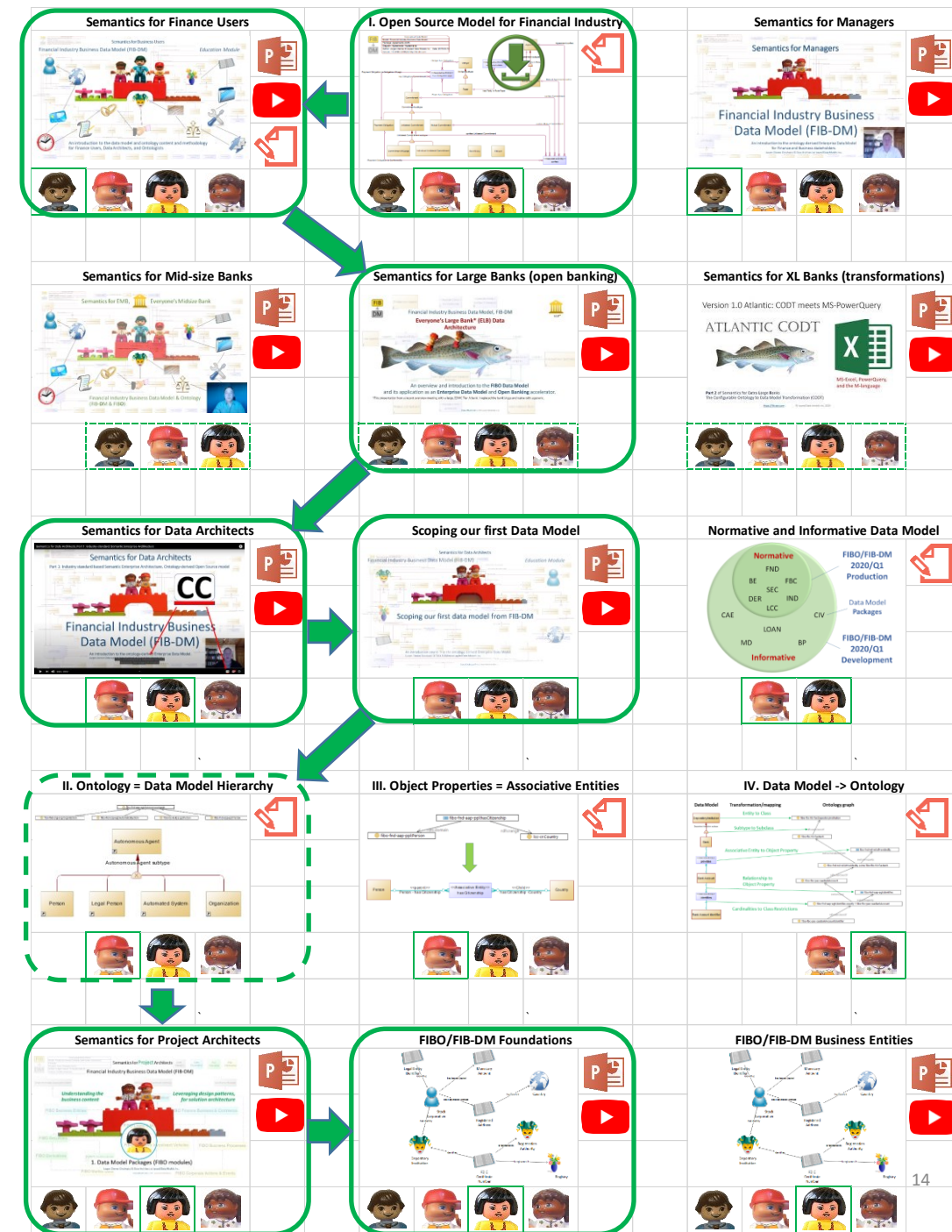
Education path for Project Architects

1. You should watch and study the general introduction to the data model, Finance, and applicable midsize, large or extra-large bank first.
2. Then progress to Semantics for (all) Data Architects, and most important, Scoping Data Models from FIB-DM.
3. The in-depth treatment of ontology to data model mapping and transformation is optional.
4. Finally, study this overview of FIB-DM packages and deep-dives into subject areas.

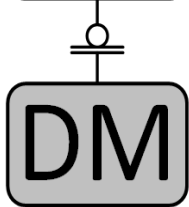


Project Architect

<https://fib-dm.com> © Jayzed Data Models Inc. 2021



Resources and next steps



The FIB-DM website: <https://fib-dm.com>

- PowerPoints for viewing and download
- Deep-dive articles
- Scalable SVG diagrams of packages and the complete subtype hierarchies.



Follow the FIB-DM LinkedIn page for news, updates and to read and share comments.
<https://www.linkedin.com/showcase/fib-dm/>



Watch FIB-DM Education videos on YouTube.
<https://www.youtube.com/c/fibdm>



Ask your questions or schedule a meeting.
jziemer@jayzed.com



Stakeholder

